

This functionality is primarily used by health policy researchers and the media as an easy way to obtain a large set of data. The data in the six tables comes from the data that is displayed in the Nursing Home Compare Tool.

For information about nursing homes in a particular geographical area, you should use the Nursing Home Compare tool instead of downloading the data.

Data Refreshes: Generally, the downloadable databases are refreshed within 24 hours after the data are refreshed on medicare.gov. The date “Modified” in the zipped file indicates the date of the last refresh of the downloadable database.

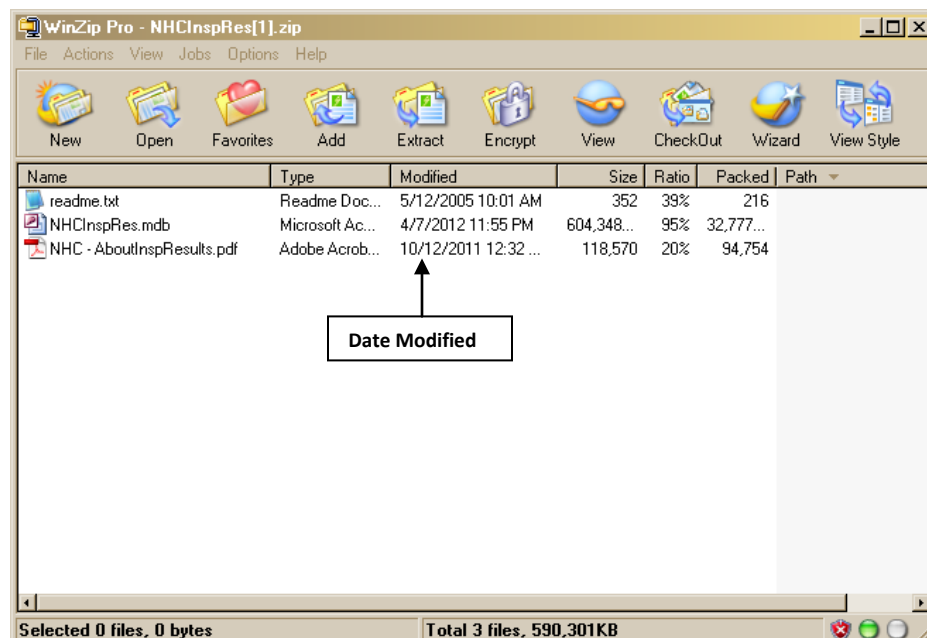
- You can tell when the Nursing Home Compare data has been updated by looking in the bottom left corner of the [Home Page](#).
- The date “Modified” in the zipped file only indicates the date the data was last manipulated, not the date it was posted to the site.

You can also find Nursing Home Compare data on data.medicare.gov. This website allows you to view the data files embedded on a webpage without downloading them. The data on data.medicare.gov can usually be viewed the same day it has been updated on Nursing Home Compare. Use data.medicare.gov to customize views and filter the Nursing Home Compare data.

Note: Beginning in July 2013, the platform for the Nursing Home Compare data sets will be data.medicare.gov. The downloadable databases will not be available after that time.

[View more information on Downloadable Databases](#)

[Learn more about Nursing Home Compare data.](#)



Inspection Results

The inspection data consists of the current and previous two health and fire safety inspections for each nursing home. The survey inspection results are collected by the state survey agencies, who perform onsite evaluations. The evaluations occur at least once during a 15-month period, or as a result of a complaint being investigated. The evaluations ensure that the nursing home residents receive quality care and services in a safe and comfortable environment in accordance with rules established by CMS. Complaints may be reported and investigated during the year (outside of the 9-15 month survey cycle). Complaint investigations that result in the citation of a health deficiency are reported to CMS and included in this website.

The State survey agencies are then responsible for entering survey information into the OSCAR database and providing updates as needed. Every attempt is made to assure the accuracy and timeliness of this information; however, we advise interpreting this information cautiously and supplementing it with information from the ombudsman's office, the State survey agency, or other sources.

The Nursing Home Compare database is divided into five (5) parts to ease the downloading process. To view the entire database, all five (5) parts must be downloaded. The five (5) parts are as follows:

1. About the Nursing Home
2. About the Nursing Home Residents
3. About the Nursing Home Inspection Results
4. About the Nursing Home Staff
5. About the Nursing Home Ratings

This document describes only the **About the Nursing Home Inspection Results** part.

In the **About the Nursing Home Inspection Results** database, six (6) tables are used. The deficiencies can be categorized into two types, annual health inspection and annual fire safety inspections; and, complaint inspections, based on when the deficiencies are identified. Deficiencies are identified during a nursing home's annual health or fire safety inspection whereas complaint deficiencies are identified before or after the annual inspection.

dbo_vwNHC_SVRY_DFCNCY 1. ProvNum 2. SurveyDate 3. DateofCorrection 4. Severity 5. NursingHomeName 6. Street 7. City 8. State 9. ZIP Code 10. PhoneNumber 11. DeficiencyType (Add Oct 2006) 12. CategoryCode 13. CategoryDesc 14. Deficiency 15. Scope 16. LevelOfHarm 17. SFF	dbo_vwNHC_CMPLNT_DFCNCY 1. ProvNum 2. SurveyDate 3. DateofCorrection 4. Severity 5. NursingHomeName 6. Street 7. City 8. State 9. ZIP Code 10. PhoneNumber 11. DeficiencyType (Add Oct 2006) 12. CategoryCode 13. CategoryDesc 14. Deficiency 15. Scope 16. LevelOfHarm
dbo_vwNHC_SVRY_DT 1. ProvNum 2. SurveyDate 3. DeficiencyType 4. NursingHomeName 5. Street 6. City 7. State 8. ZIPCode 9. PhoneNumber 10. QISSurvey (Add Oct 2006) 11. SFF (Add Apr 2008)	dbo_NHC_ENFRCMNT_CNTS 1. ProvNum 2. cmp_cnt 3. dpna_cnt 4. enf_cnt
dbo_NHC_ENFRCMNT_DTES 1. ProvNum 2. enf_type 3. cmp_amt 4. survey	dbo_NHC_SUBST_INCDS 1. ProvNum 2. Intk_Type 3. Allgtn_Count

The **dbo_vwNHC_SRVY_DFCNCY** table contains seventeen (17) fields. This table lists the survey deficiencies found during the nursing home annual inspection

1. ProvNum: varchar(50)
Lists the nursing homes by their provider identification number.
2. Survey Date: char(10) MM/DD/YYYY
Lists the date the most recent survey was performed.
3. Date Of Correction: char(10)
Lists the date the deficiency listed in the Deficiency field was corrected.
4. Severity: char(1)
Lists the alphabetic code for the severity of each deficiency, representing the combination of the scope and the level of harm. The following are the severity codes:
 - A for Isolated /Potential for minimal harm
 - B for Pattern /Potential for minimal harm
 - C for Widespread /Potential for minimal harm
 - D for Isolated /Minimal harm or potential for actual harm
 - E for Pattern /Minimal harm or potential for actual harm
 - F for Widespread /Minimal harm or potential for actual harm
 - G for Isolated /Actual harm
 - H for Pattern /Actual harm
 - I for Widespread /Actual harm
 - J for Isolated /Immediate jeopardy to resident health or safety
 - K for Pattern /Immediate jeopardy to resident health or safety
 - L for Widespread /Immediate jeopardy to resident health or safety
5. Nursing Home Name: varchar(80)
Lists the name of the nursing.
6. Street: varchar(60)
Lists the street address of the nursing home.
7. City: varchar(30)
Lists the city in which the nursing home is located.
8. State: varchar(2)
Lists the 2-letter State code where the nursing home is located.
9. Zip Code: char(5)
Lists the 5-digit numeric zip code of the nursing home.
10. PhoneNumber: char(10)
Lists the 10-digit numeric telephone number, including area code.

11. DeficiencyType: char(11)

Lists the type of inspection deficiency, Health or Fire Safety.

12. CategoryCode: char(2)

Lists the numeric code used for each category description.

13. CategoryDesc: char(50)

Lists the names of the actual deficiency category descriptions.

The eight (8) HEALTH deficiency categories used are:

- Mistreatment Deficiencies
- Quality Care Deficiencies
- Resident Assessment Deficiencies
- Resident Rights Deficiencies
- Nutrition and Dietary Deficiencies
- Pharmacy Service Deficiencies
- Environmental Deficiencies
- Administration Deficiencies

The nineteen (19) FIRE SAFETY deficiency categories used are:

- Building Construction
- Interior Finish
- Corridor Walls And Doors
- Vertical Openings
- Smoke Compartmentation and Control
- Hazardous Area
- Exit and Exit Access
- Exits and Egress
- Illumination And Emergency Power
- Emergency Plans And Fire Drills
- Fire Alarm Systems
- Automatic Sprinkler Systems
- Smoking Regulations
- Building Service Equipment
- Furnishings and Decorations
- Laboratories
- Medical Gases and Anesthetizing Areas
- Electrical Deficiencies
- Miscellaneous

14. Deficiency: char(500)

Lists the deficiency for which the nursing home was cited.

15. Scope: char(50)

Lists the scope of residents affected. The following are the terms used within the database and what they mean on the website:

- Not available
- Isolated for Few
- Pattern for Some
- Widespread for Many

16. Level Of Harm: varchar(50)

Lists the level of harm to the residents produced by the deficiency. The following are the levels listed:

- Not available
- Potential for minimal harm
- Minimal harm or potential for actual harm
- Actual harm
- Immediate jeopardy to resident health or safety

17. SFF : varchar(3)

Special Focus Facility - Indicates nursing homes that have a record of persistently poor survey performance, and have been selected for more frequent inspections and monitoring

=====

The **dbo_vwNHC_CMPLNT_DFCNCY** CSV flat file contains sixteen (16) fields. This CSV file lists the complaints deficiencies found in each nursing home. The field names and values are the same as those found in the **dbo_vwNHC_SURVY_DFCNCY** above with the following exceptions:

- The “survey date” is the date the complaint(s) was substantiated
- The SFF field is not included in the complaints deficiency table

=====

The **dbo_vwNHC_SVRY_DT** table contains eleven (11) fields. This table lists the three most recent health and fire safety inspection dates for each nursing home.

1. ProvNum: varchar(50)

Lists the nursing homes by their provider identification number.

2. Survey Date: char(10)

Lists the date the most recent survey was performed.

3. Deficiency Type: char(11)

Lists the type of inspection deficiency, Health or Fire Safety.

4. Nursing Home Name: varchar(80)

Lists the name of the nursing home.

5. Street: varchar(60)

Lists the street address in which the nursing home is located.

6. City: varchar(30)

Lists the city in which the nursing home is located.

7. State: varchar(2)

Lists the 2-letter State code in which the nursing home is located.

8. Zip Code: char(5)

Lists the 5-digit numeric zip code for the nursing home.

9. PhoneNumber: char(10)

Lists the 10-digit numeric telephone number, including area code, for the nursing home.

10. QISSurvey: char(3) YES/NO

Quality Indicator Survey (QIS) process Indicator - The QIS uses a structured review of the medical records and direct observations of the care of larger samples of residents to derive rates for a comprehensive set of Quality of Care Indicators (QCIs).

11. SFF: char(3) YES/NO

Special Focus Facility - Indicates nursing homes that have a record of persistently poor survey performance, and have been selected for more frequent inspections and monitoring.

=====

The **dbo_NHC_ENFRCMNT_CNTS** table contains four (4) fields. This table lists total number of enforcements filed for each nursing home.

1. ProvNum: varchar(50)

Lists the nursing homes by their provider identification number.

2. cmp_cnt: varchar(10)

Lists the total number of Civil Money Penalty count.

3. dpna_cnt: varchar(10)

Lists the total number of Denial of Payment for New Admission count.

4. enf_cnt: varchar(10)

Lists the total Enforcement Actions count.

=====

The **dbo_NHC_ENFRCMNT_DTES** table contains four (4) fields. This table lists the survey enforcements found during the nursing home annual inspection.

1. ProvNum: varchar(50)

Lists the nursing homes by their provider identification number.

2. enf_type: varchar(10)

Lists the type of Enforcements; Civil Money Penalty (CMP) or Denial of Payment for New admission (DPNA).

3. cmp_amt : varchar(8)

Lists the complaint amount

4. survey: varchar(10)

Lists the date the most recent survey was performed.

The **dbo_NHC_SUBST_INCDS** table contains three (3) fields. This table lists total number of complaints filed for each nursing homes.

1. ProvNum: varchar(10)

Lists the nursing homes by their provider identification number.

2. Intk_Type: char(1)

List the type of Complaints; Substantiated Complaints(C) or Incidents Reported by the Nursing Home (I),

3. Allgtn_Count: integer

Total count of allegations.